

WDWL-4S Series

LED Square Work Light

FEATURES

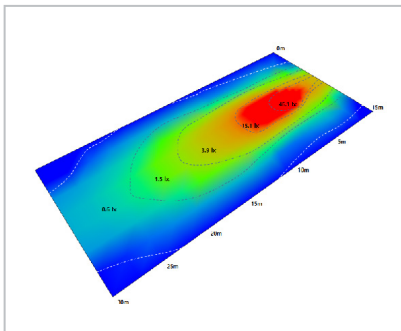
□ Cable Reference
DT: Deutsch connector / AM: AMP connector / W: Lead wire

- Die-cast for superior heat dissipation
- Adjustable trunnion mounting bracket
- Vertical fins maximize heat dissipation
- Low power consumption
- Polycarbonate lens
- Off-road racing, ATV/UTV, truck, mining, agricultural, heavy-duty equipment, boat, construction, etc.
- ECE R10 certification

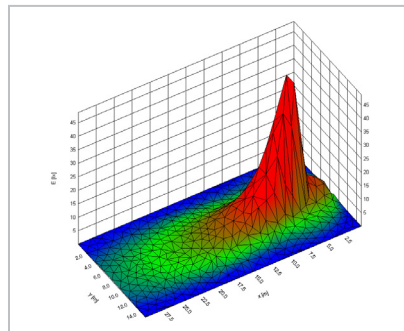
SPECIFICATION

Input voltage	DC10 ~ 36V
Current draw (12V)	2.1A (4S25DT) / 3.3A (4S40W)
Wattage	25W (4S25DT) / 40W (4S40W)
Operating temperature	-40°C ~ +80°C
IP rating	IP69K
Weight	450g (4S25DT) / 610g (4S40W)
Lumens	1750lm (4S25DT) / 2680lm (4S40W)
Housing color	Black
Lifespan	50,000 Hours
Vibration rating	15G

WDWL-4S25W

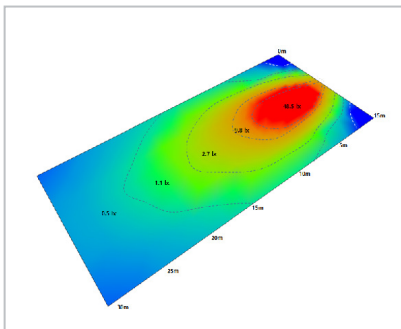


Light Distribution Diagram

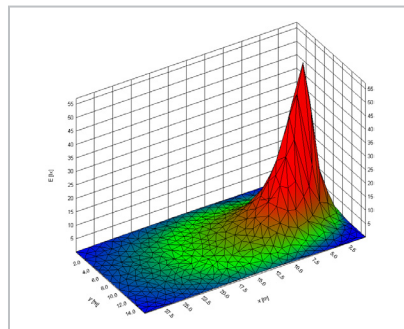


3D Mountain Plot

WDWL-4S40W



Light Distribution Diagram



3D Mountain Plot



□ WDWL-4S25DT



□ WDWL-4S40W

