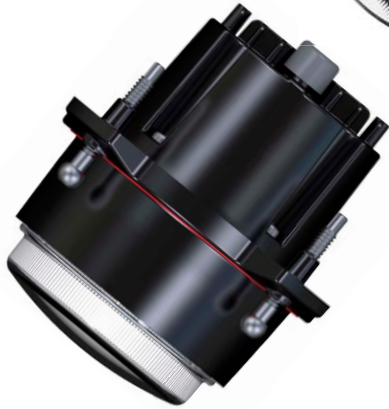


Reflector assembly

Heat sink

**LED
Front
directional
lamp**



- **Ideal for:**
 - Custom Front directional lamp
 - Endurance racing
 - Retrofit

- **Features:**
 - Reflector type lamp
 - Front directional lamp only
 - ECE R6.01 compliant

- **Single lamp includes:**
 - Lamp with High power LED and adjuster screws
 - Universal bracket, control unit and mounting instructions

- **Multi voltage:**
 - 12V and 24V



WDHL-1R90DL

Dimensions (mm)
118(W) x 118(H) x 137(D)

SPECIFICATION/

- **Input voltage**
DC9 ~ 36V
- **Current consumption**
0.5A
- **Power in watt**
6W (3W OSRAM amber LED x 2)
- **Operating temperature**
-40°C ~ +125°C
- **Lumens**
500lm
- **LED life cycle**
50,000 Hours



weldex.com
oem@weldex.com
Tel: (714) 761-2100 [USA]
Fax: (714) 761-3811 [USA]
Tel: +49 (0)2102 528 2803 [GER]
Fax: +49 (0)2102 528 2804 [GER]

© 2014 Weldex
6751 Katella Avenue, Cypress, CA 90630 [USA]
Broichhof Strasse 5 D-40880 Ratingen, Germany [GER]

